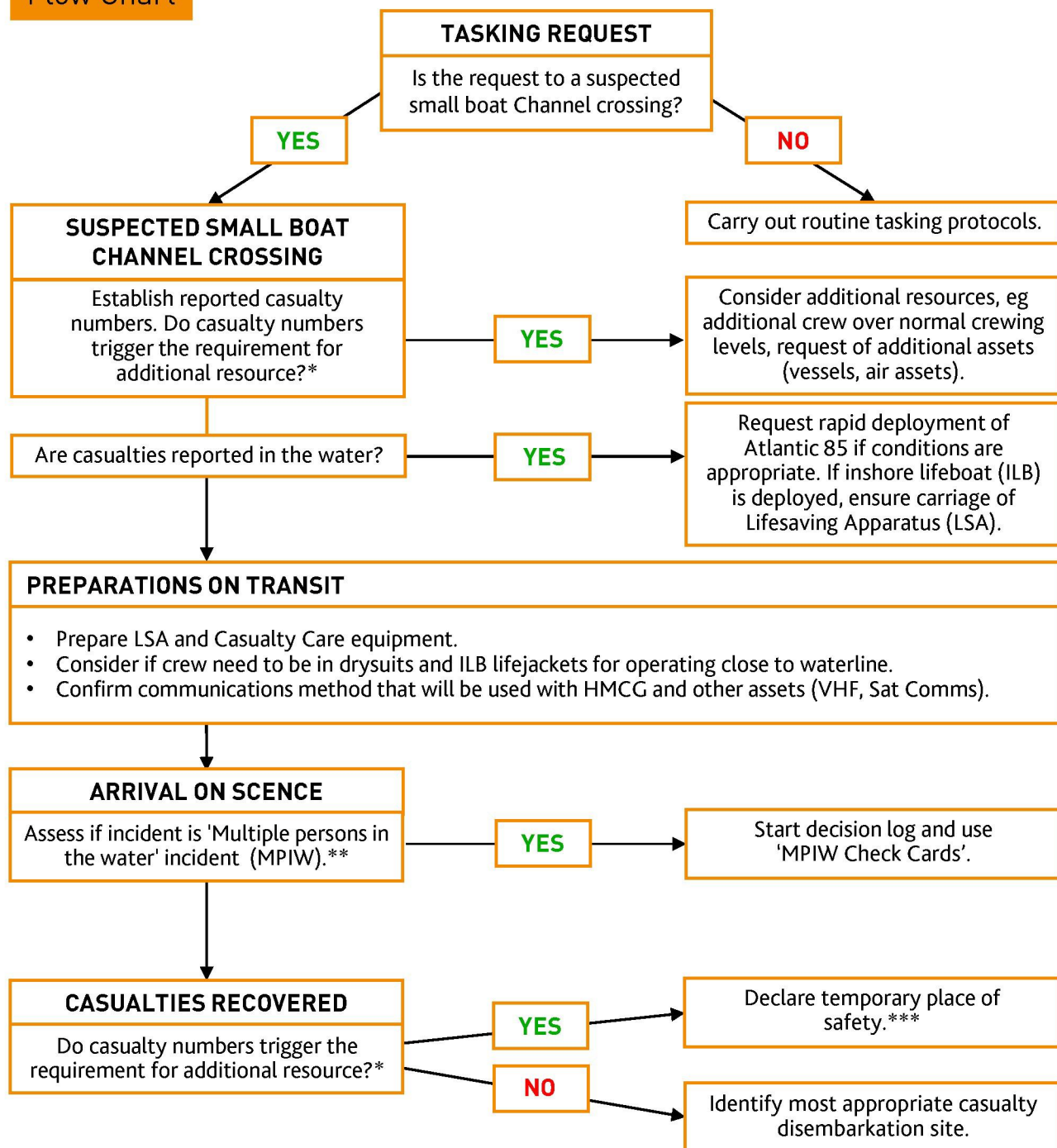


# Multiple persons in the water incident

## Flow Chart



### \*ADDITIONAL RESOURCE TRIGGER (NUMBER OF CASUALTIES ABOARD)

Severn	60
Tamar	55
Trent	53
Mersey	30
Shannon	40
Atlantic 85	12

\*\*The need for immediate response to large numbers of distressed persons in the water which is beyond the capabilities of the available assets on scene.

\*\*\*In this situation, once the maximum numbers of casualties is reached, additional casualties must not be embarked but supported off the lifeboat with appropriate lifesaving appliances, for example:

- tethered to the lifeboat and supported by a life raft or similar lifesaving appliance.
- tethered to the lifeboat and supported by a personal lifesaving appliance in the water.